

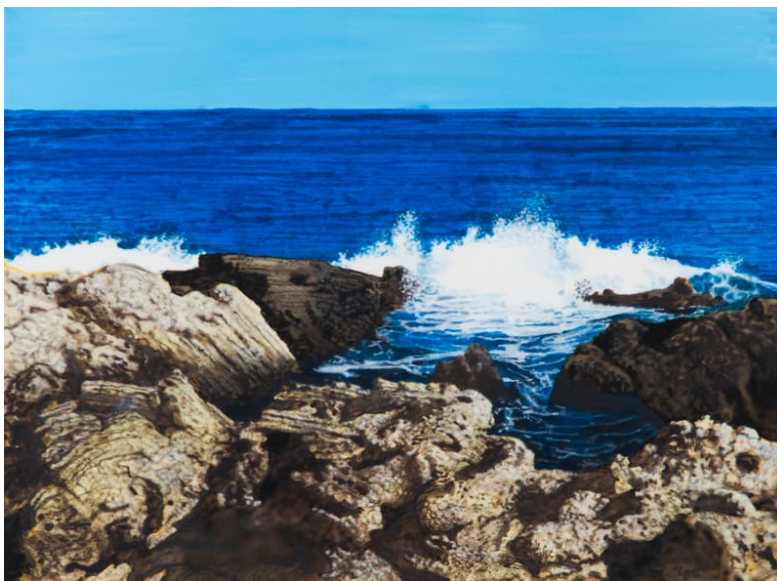
**Der Schaum der Tage  
Fundfoto**

Sergio Frutos  
2017

Ink and acrylic on canvas  
80 x 100 cm

Unique  
Signed

SF-P 17-14



**About the project: Parallel Lines**

Parallel Lines registers memories from different sources and times. Captured moments, no-places, transit spaces, hotel rooms, depict a non linear storytelling.

Images from old familiar albums, travel pictures and contemporary portraits of artists articulate a dialogue between narratives.

Following the idea of Deleuze and Guattari that consider our lives are coded in specific lines<sup>1</sup>, this series join together moments from my personal trip and from my parents, the previous generation, establishing a dialog between the paths that me and they have walked, exploring the relationship between those instants registered by casual, everyday eye of a camera.

1. Gilles Deleuze and Felix Guattari, "A Thousand Plateaus: Capitalism and Schizophrenia." *Journal of Interdisciplinary History* 19, no. 4 (1989): 657. →