

## PARALLEL LINES

Parallel Lines registers memories from different sources and times. Captured moments, no-places, transit spaces, hotel rooms, depict a non linear storytelling.

Images from old familiar albums, travel pictures and contemporary portraits of artists articulate a dialogue between narratives.

Following the idea of Deleuze and Guattari that consider our lives are coded in specific lines<sup>1</sup>, this series join together moments from my personal trip and from my parents, the previous generation, establishing a dialog between the paths that me and they have walked, exploring the relationship between those instants registered by casual, everyday eye of a camera.

1. Gilles Deleuze and Felix Guattari, "A Thousand Plateaus: Capitalism and Schizophrenia." *Journal of Interdisciplinary History* 19, no. 4 (1989): 657. →



Field, Countryside. Gouache on paper, 70 x 100 cm, 2013 →



Creek. Gouache on paper, 70 x 100 cm, 2013 →



Ahaggar. Oil on canvas, 80 x 100 cm, 2014 →



Mesa. Acrylic on canvas, 120 x 130 cm, 2013 →





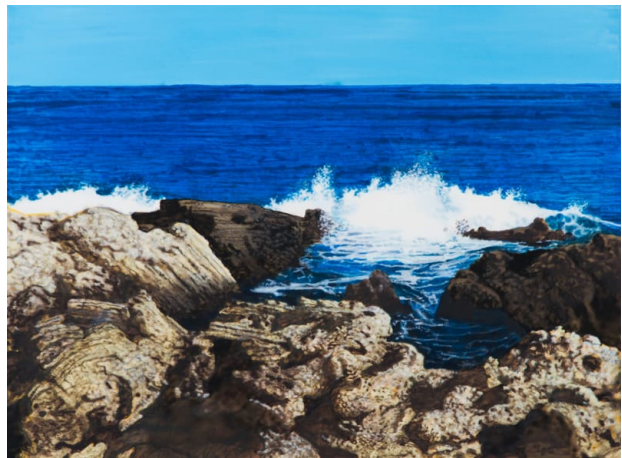
Peña Oroel, 1984. Acrylic on canvas, 80 x 100 cm, 2015 →



Rosquillas. Oil on canvas, 80 x 100 cm, 2015 →



Dalmata. Oil on canvas, 80 x 100 cm, 2013 →



Der Schaum der Tage. Ink and acrylic on canvas, 80 x 100 cm, 2017 →



Strand I. Acrylic on canvas, 140 x 160 cm, 2013 →



Strand II. Acrylic on canvas, 80 x 100 cm, 2013 →





Herr Zhang. Acrylic on canvas, 100 x 80 cm, 2013 →



Merry Kings. Acrylic on canvas, 100 x 80 cm, 2013 →



Mr Leapman. Acrylic on canvas, 100 x 80 cm, 2013 →



Neue Helden. Acrylic on canvas, 80 x 100 cm, 2013 →



The Strange Family. Oil on canvas, 200 x 180 cm, 2013 →



Swimming Pool I. Acrylic on canvas, 100 x 80 cm, 2013 →



Swimming Pool II. Acrylic on canvas, 80 x 100 cm, 2013 →



Aluminium Foil. Gouache on paper, 70 x 100 cm, 2013 →



Brno. Gouache on paper, 70 x 100 cm, 2013 →